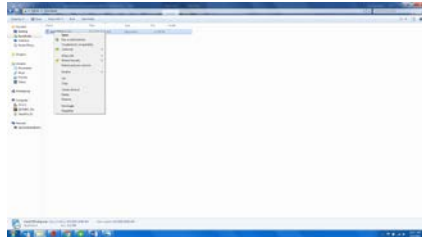
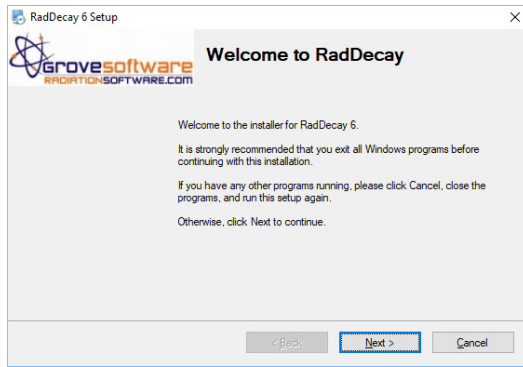


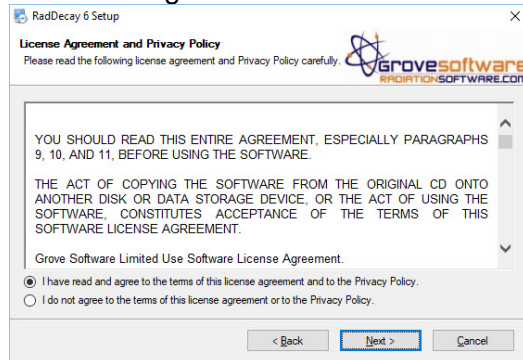
1. Download the setup file to your hard drive or insert the CD-ROM into the CD-ROM drive. Right click the rdd600setup.exe file and select "Run as administrator".



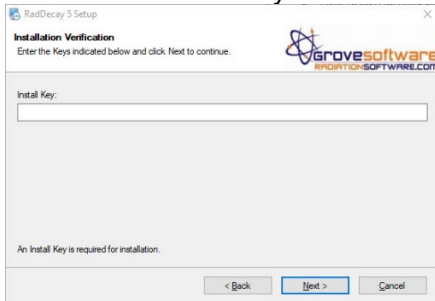
2. Click **Next** on the Wizard.



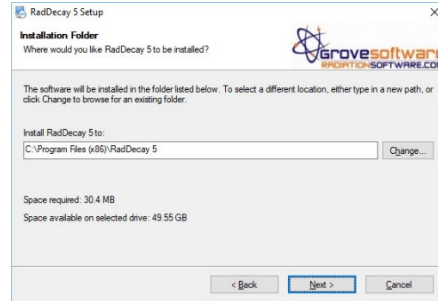
3. Click the button to accept the terms of the license agreement and click **Next**.



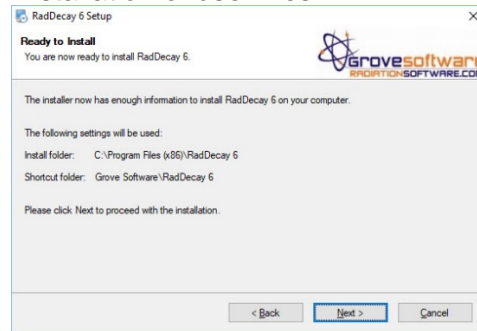
4. Insert your name and click **Next**. Then enter the Install Key and click **Next**.



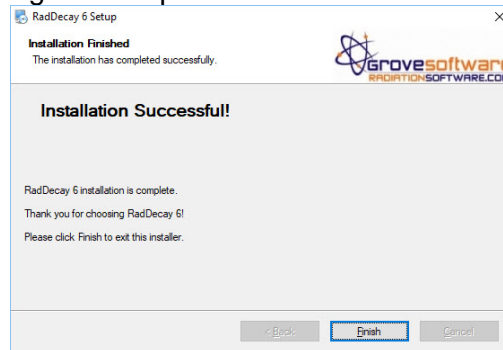
5. Click **Next** on the next several screens to start the installation. Select the location for installation location.



5. Click **Next** on the next several screens to start the installation. Select the location for installation of user files.



7. Click **Next** on the next several screens and Click **Finish** when the installation program completes.

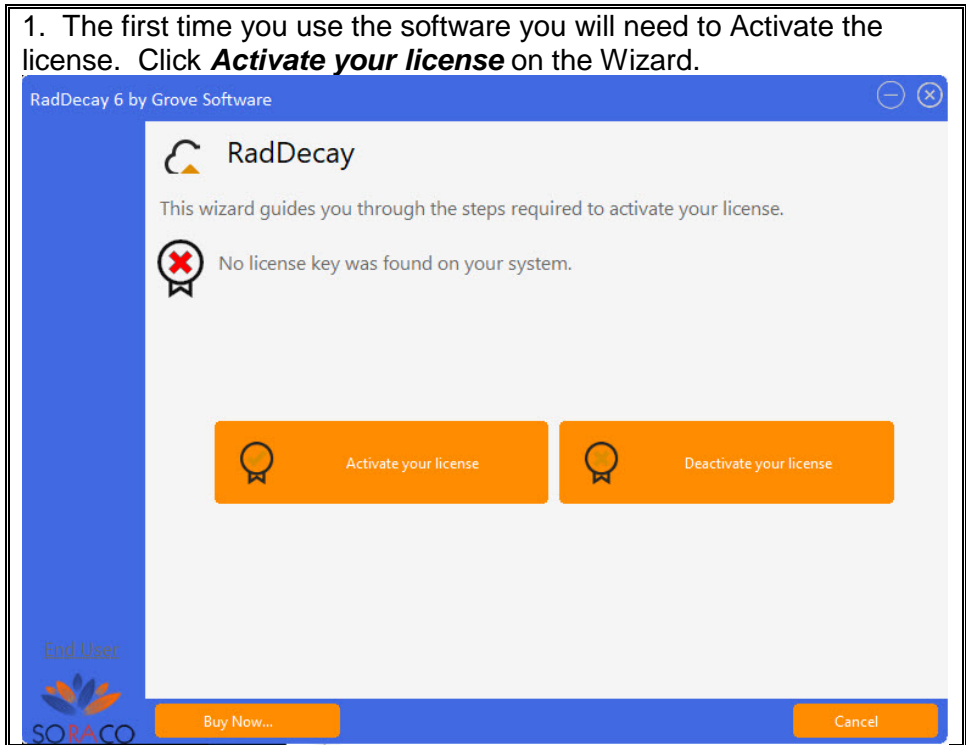


**Troubleshooting:**

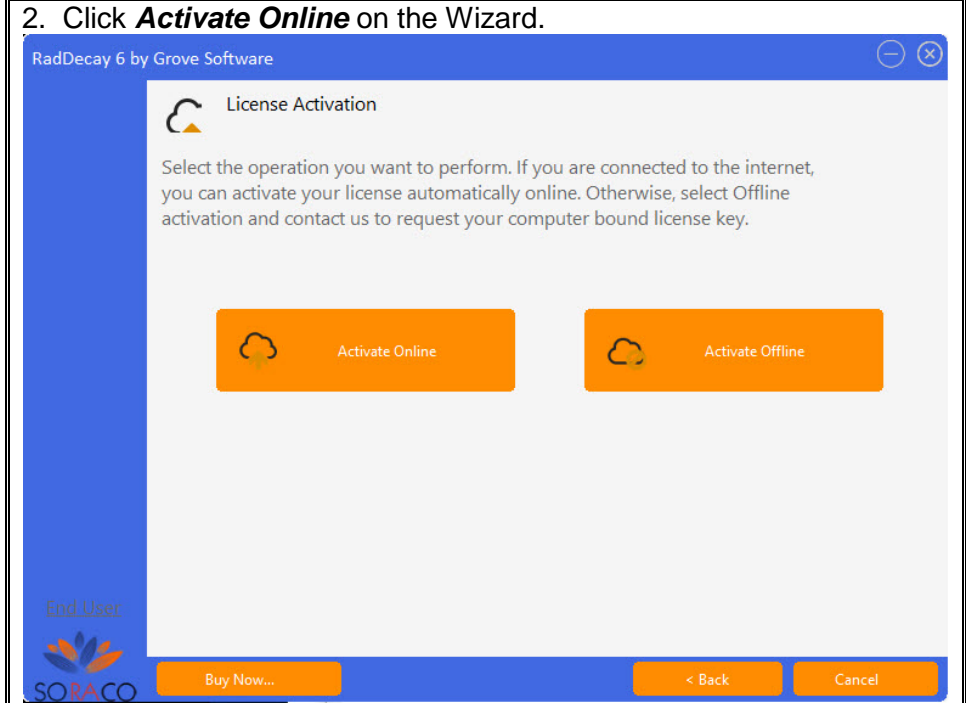
- If the install key and/or the license key is not accepted, make sure that zeros (0) and capital letter oh's (O) are not interchanged.
- You must have write access to the Programs directory to install and execute the software (this may require administrator access).

For technical support, please email [questions@radiationsoftware.com](mailto:questions@radiationsoftware.com).

1. The first time you use the software you will need to Activate the license. Click **Activate your license** on the Wizard.



2. Click **Activate Online** on the Wizard.



3. Enter the Activation Key provided with the software and click **Activate**.

